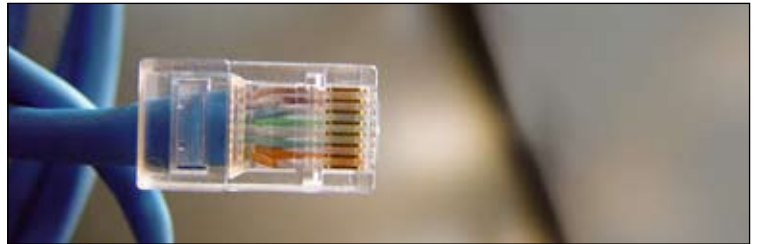


## Industry Solution MEGABAU® based on Microsoft Dynamics NAV at SPIE Deutschland System Integration GmbH



SPIE designs, builds and maintains security, communications and data infrastructures for a diverse range of customers in Germany and Europe. Turnkey solutions, world-class project management and individual service solutions can be provided in all areas.

Since 02.01.2010 SPIE has worked with Microsoft Dynamics NAV 5.01 at 7 locations nationwide including the integration of project management and mobile time-tracking.



As part of a worldwide group SPIE Deutschland is a leading system integrator for network and security technologies providing maximum expertise and being in the position of realizing transnational projects.

300 highly qualified employees guarantee a customized project approach and implementation at 7 locations nationwide. Whether Wireless LAN, Voice or Video over IP, LAN infrastructures, Network or Building Security SPIE offers a full range of services from consulting, installation, maintenance, through to operating and training.

Quality and security come first at SPIE and these high standards in security and quality needed to be reflected in its new business software Microsoft Dynamics NAV.



The preceding software solution had been a heterogeneous IT infrastructure

with many isolated applications. The following business processes had to be incorporated and mapped in one, single solution: project management and controlling, manufacturing, warehouse, sales, purchase, CRM, time recording, cost accounting, payroll and service.

Furthermore, the new software solution should not need more than **20% customization**. The more customization exists in a system, the more maintenance and related sources of error you have. A further important requirement was the ideal integration of project controlling and group reporting. Given the large number of existing stand-alone applications at the start of the project and the specific requirements the benefits of an integrated complete solution through Microsoft Dynamics NAV and the industry solution MEGABAU were obvious.

The decision in favour of the implementation partner Cosinus was based on the company's industry know-how, the experience from more than 220 ERP projects, project controlling specialists for the building sector and additional specialists for the areas of financial accounting, service, PPS

(Production Planning System), ODA (Operational Data Acquisition) and time management.

In February 2008 all company processes were analyzed and examined for "optimization potential".



SPIE was closely involved in the entire development process through early training, testing, joint project progress planning, and milestones like prototype acceptance. In June 2008 the time management implementation had already been completed, which was met with great relief by the payroll office staff. On this basis, a further highlight of the new ERP Software was the installation and integration of the on-site touch-screen wireless ODA (Operational Data Acquisition) solution in 2010.

## The project requirements of SPIE were as follows: “We would like a solution for all business processes, which needs at most 20% customization.”

The real start and “going live” of the complete system was realized in January 2009.

Since then SPIE has benefited from instant project controlling figures, clear-cut project processing, the possibility of developing solutions independently, a reduced administrative workload through the single solution, and more security in day-to-day business operations through transparent company processes.

Microsoft Dynamics NAV with the industry solution MEGABAU unifies construction industry and business administration processes and has been a complete success. Every process step which occurs on-site, in the warehouse, or in the production is automatically recorded in the accounting and controlling departments. MEGABAU is the solution for all companies which calculate, quote and invoice project services requiring for this taking on-site measurements, estimating quantities, managing and allocating material, personnel and equipment.



### Project Facts:



#### Address:

SPIE  
Deutschland System Integration GmbH  
Am Ruschgraben 135a  
D-76139 Karlsruhe

info.de@spie.com  
www.spie-de.com

**Industries:** System Integration, Data Networks, Telecommunications, Security

**Solution:** MEGABAU with the additional software modules:

Subcontractor Management, GAEB interface, Partial Payment Accounting, Non-Stock Item Management including Datanorm Import, Long Text Komfort-Editor, Roombook, Connection of the 7 locations, Integration of PPS and ODA, Service, Payroll, Travel Expenses, TempVision (Labour Time Management)

**Special Features:** Project Time Management (Working Time and Project Costing) via modern touch-screen mobile hand-held devices

**Microsoft Dynamics NAV-Version:** 5.01

**Users:** 76 (NAV User)

**Project Start:** February 2008

**Project Managers:** SPIE: Jochen Gamber, Commercial Executive  
Cosinus: Jovan Buzdumovic  
Network Dimensions (MEGABAU developer):  
Günther Schwaiger

**Freiburg**  
Cosinus  
Informationssysteme GmbH  
Gundelfinger Straße 2  
D-79108 Freiburg  
Telefon: +49.761.51.004-0  
Telefax: +49.761.51.004-99

**Mannheim**  
Cosinus  
Informatik GmbH  
Krügerstraße 7-11  
D-68219 Mannheim  
Telefon: +49.621.72.847-0  
Telefax: +49.621.72.847-79

**Villingen-Schwenningen**  
Cosinus  
Informationssysteme GmbH  
Peterzeller Straße 1  
D-78048 Villingen-Schwenningen  
Telefon: +49.7721.87.86.49-0  
Telefax: +49.7721.87.86.49-9

**Luzern**  
Cosinus AG  
Schlossstrasse 1  
CH-6005 Luzern  
Telefon: +41.41.310.85-55  
Telefax: +41.41.310.85-67  
Internet: www.cosinus-ag.ch